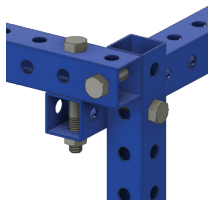


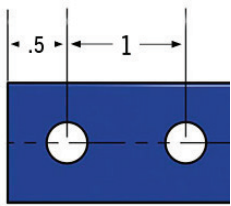
MODULAR MATERIAL HANDLING SYSTEM

- 1" x 1" Perforated Square Tube
- 16 gauge mild steel with a powder coated finish
- Standardized 6" precut lengths up to 120" long

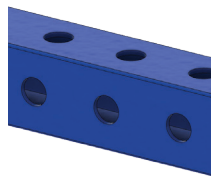
6"	12"	18"	24"
30"		36"	



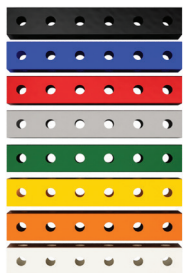
- Patented 3-point Joint
- Load bearing strength of a welded joint
 - Self-Squaring
 - Simply bolts together with 5/16" bolts and nuts



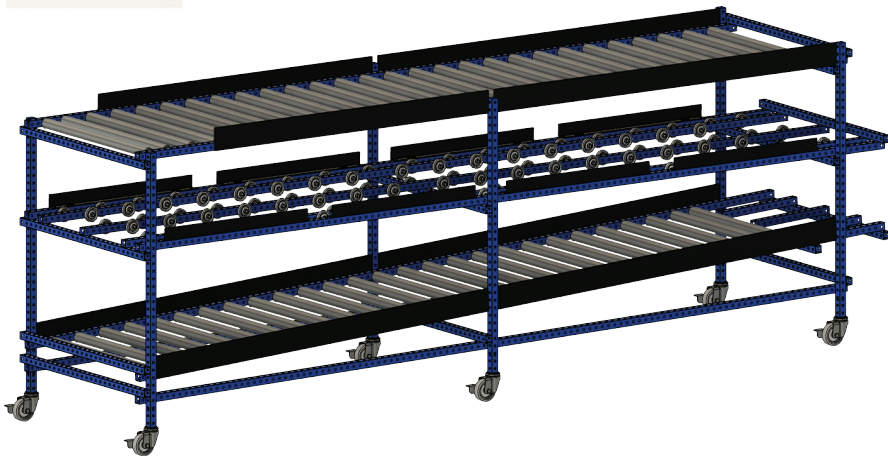
- Standardized Hole Pattern
- 1" Hole Spacing
 - Hole Pattern on all Four Sides
 - Contact us about custom hole pattern configurations



- Pre-Cut from the Factory
- Standard lengths are pre-cut and finished from the factory in 6" increments
 - Contact us about cutting to custom lengths

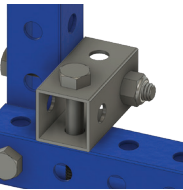


- Pre-Finished at the Factory
- Durable Powder Coat Finish
 - Available in 8 Standard Colors
 - Contact us about custom finish options

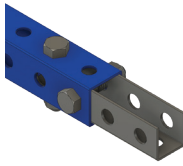


STRUCTURAL BRACKETS

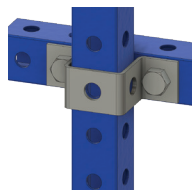
Structural tubes can be bolted together with common fasteners without the need for specialty brackets. These brackets are available if your application has some unique geometry to work around. We challenge you to design your structure without cutting the structural tube or using brackets.



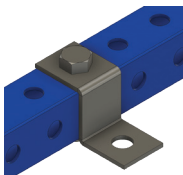
2" Stub Tube



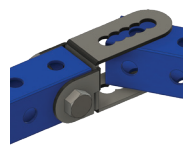
4" Tube Union



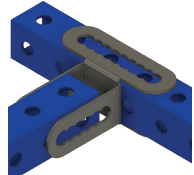
Ergo Lift Bracket



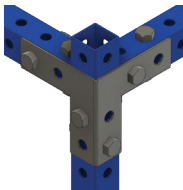
Shelf Bracket



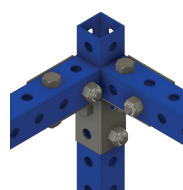
Universal Joint Connector



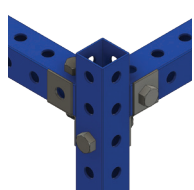
Multi Slot Bracket with 1/4" Increments



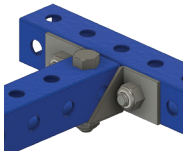
External Flush Edge Joint



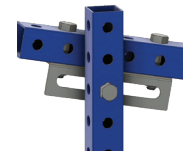
Internal Double Edge Joint



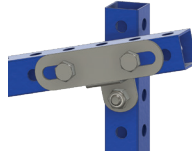
Internal Single Flush Edge Joint



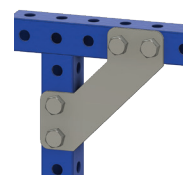
Horizontal Tube Support



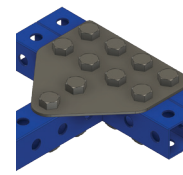
Slotted Flow Bracket



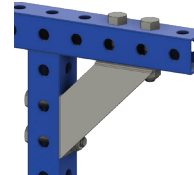
Universal Flow Bracket



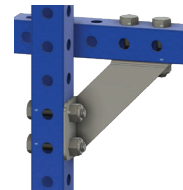
Flat Gusset



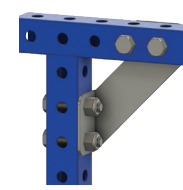
4" Center Adapter



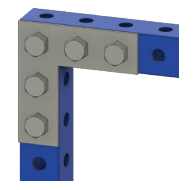
Flush Gusset



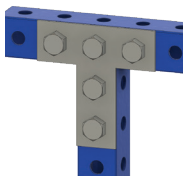
Offset Gusset – Right



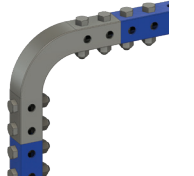
Inline Gusset – Right



3" x 3" L Bracket



3" x 3" T Bracket

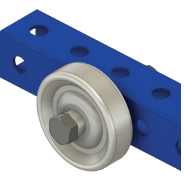


3" Radius Bent Tube

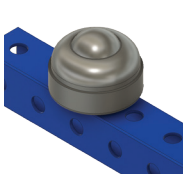
GRAVITY FLOW RACK USING BOTH ROLLERS & SKATE WHEELS

CONVEYORS

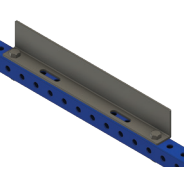
Use gravity to improve flow. Design durable flow racks for any application. Skate Wheels and Ball Transfers can be mounted to any side of the Structural Tube with spacing to meet any requirement.



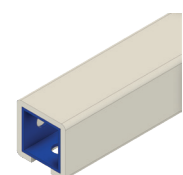
Skate Wheel



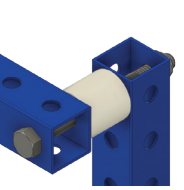
Ball Transfer



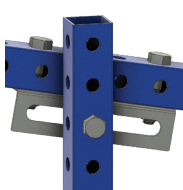
Lane Guide L Bracket



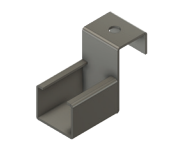
Slide On Guide



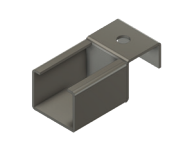
1" Nylon Spacer



Slotted Flow Bracket



Micro Wheel Stop Mount Adapter



Micro Wheel Flush Mount Adapter



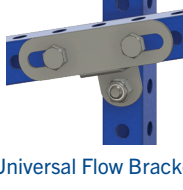
120" Micro Wheel Conveyor



Flex Slide 24" x 120" Sheet



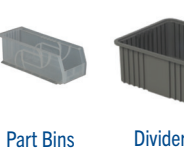
Rollers (Any Width)



Universal Flow Bracket

BINS, DIVIDER TRAYS & TOTES

Bins are used to store and flow parts in specific quantities. Divider trays keep parts and supplies separated and organized. Totes are used for part conveyance across suppliers, warehouse and factory operations.



Part Bins



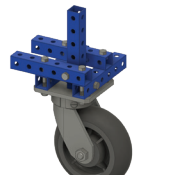
Divider Trays



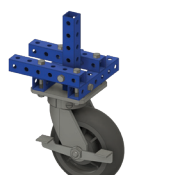
Totes

CASTERS & BASES

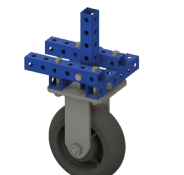
Buying casters can be a confusing task. There are many styles, sizes and capacities available, and we can get a lot of them. But these are our favorites, and are great all-around casters. Contact us if you have a specific need.



6" Donut Swivel Plate Caster



6" Donut Swivel Plate Caster with Side Brake



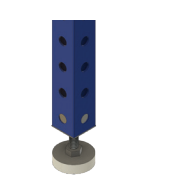
6" Donut Rigid Plate Caster



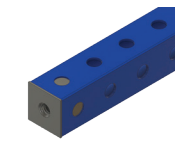
3" Donut Expandable Caster



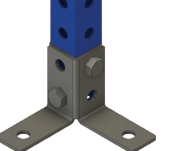
3" Donut Expandable Caster with Brake



Adjustable Leveler Nylon Glide Stem



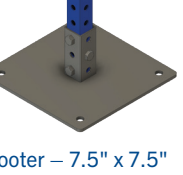
Threaded Metal Insert for Leveler



Footer Bracket



Footer – 4" x 4"



Footer – 7.5" x 7.5"



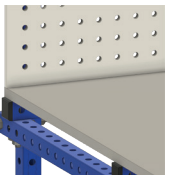
6" Loaded Floor Lock



Gas Springs for Ergo Lift

WORK SURFACES

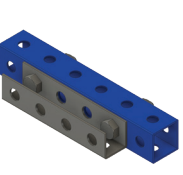
Complete work stations, carts and racks with HDPE, Delrin, tool control and shadow board material. Multiple colors, thicknesses and custom-cut sizes are available.



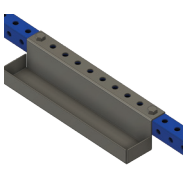
Pegboard & Work Surfaces

ACCESSORIES

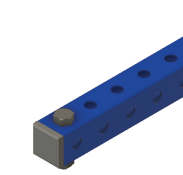
These accessories integrate with the system to provide point of use solutions to the user. Hitch kits also allow your carts to be linked together or directly to a tugger.



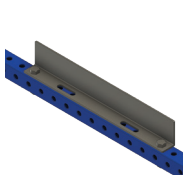
4" Bin Louver



Point of Use Tray



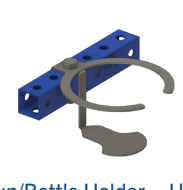
Notched Endplug



Lane Guide L Bracket



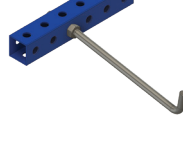
Drawer Slide Kit



Cup/Bottle Holder – Horiz.



Bolted Horiz. Hook 3" Gap



Bolted Peg Hook



1" Nylon Spacer



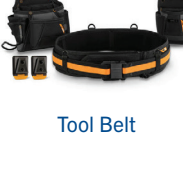
Slide on Guide – 120"



Handle



Spool Holder



Tool Belt



3" x 3" Turn Table

1" x 1" Steel Tube

"A" Length	Single Point	Evenly Distributed
12"	485 lbs.	970 lbs.
24"	240 lbs.	480 lbs.
36"	152 lbs.	304 lbs.
48"	121 lbs.	242 lbs.
60"	97 lbs.	194 lbs.
72"	74 lbs.	148 lbs.
84"	69 lbs.	138 lbs.
96"	61 lbs.	122 lbs.
108"	52 lbs.	104 lbs.
120"	38 lbs.	76 lbs.

1"x 2" load data is found on our website.

Single Point and Evenly Distributed Loading. These are the maximum amounts of weight per length "A" allowed before permanent deforming of tube occurs.

Notes:

- To ensure proper assembly, standard nuts should be torqued to a minimum of 14 in-lbs.
- Products are not intended for human support. All technical specifications are referenced only.

CUSTOM PART DELIVERY ("MINOMI") RACK FOR AUTOMOTIVE APPLICATION

